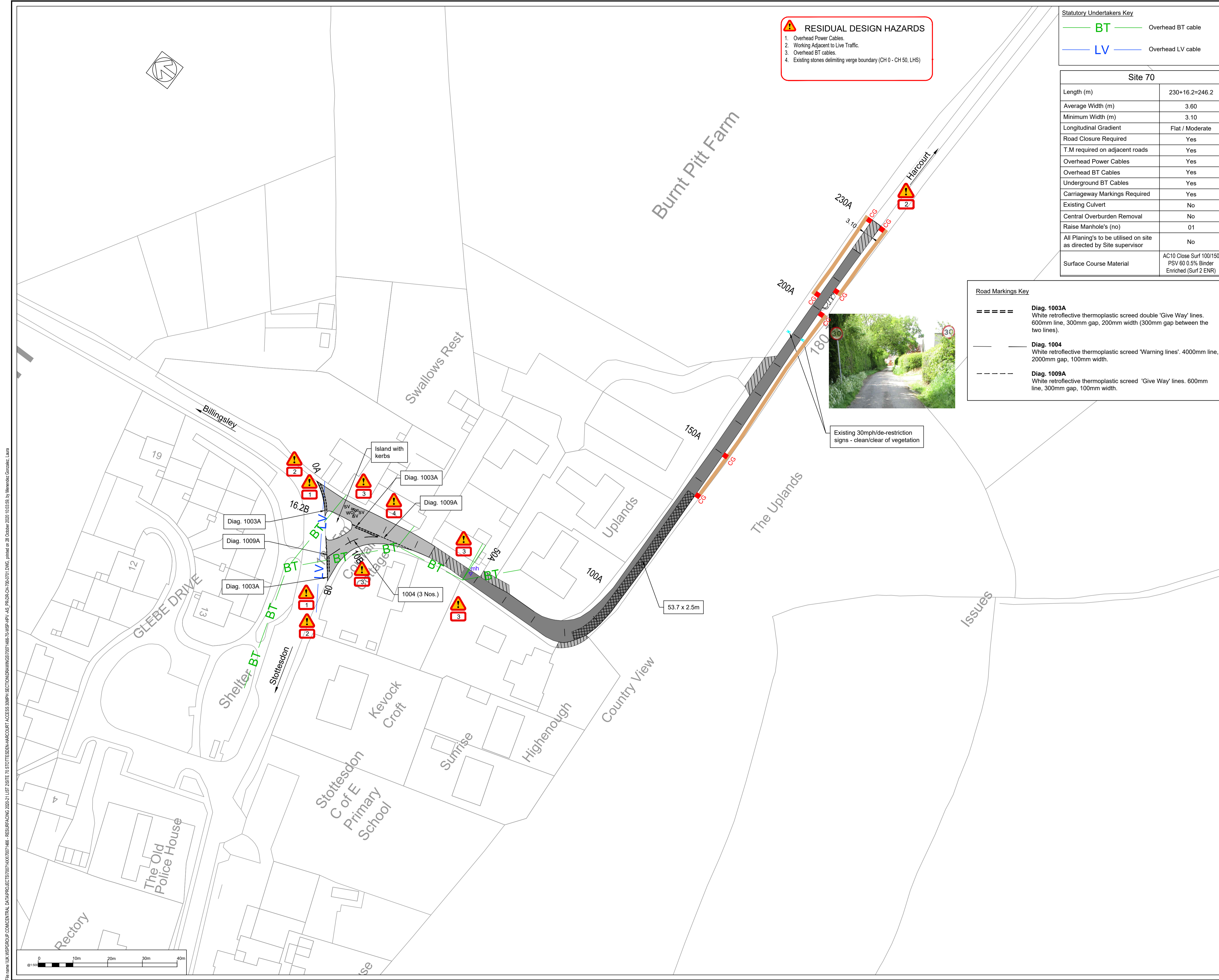


File name: I:\UK\WSP\GROUP\COMP\CENTRAL\DATA\PROJECTS\70071466-RESURFACING\70071466-RESURFACING\2020-21\LIST\2SITE\70\STOTTESDON\HARCOURT_ACCESS_30MPH_SECTION\DRAWINGS\70071466-70-WSP-HPV-AS_PR-DR-CH-700-0701.DWG, printed on: 28 October 2020 10:03:59, by: Menendez, Contact: Lara



- RESIDUAL DESIGN HAZARDS**
- Overhead Power Cables.
 - Working Adjacent to Live Traffic.
 - Overhead BT cables.
 - Existing stones delimiting verge boundary (CH 0 - CH 50, LHS)

Statutory Undertakers Key

BT Overhead BT cable

LV Overhead LV cable

Site 70

Length (m)	230+16.2=246.2
Average Width (m)	3.60
Minimum Width (m)	3.10
Longitudinal Gradient	Flat / Moderate
Road Closure Required	Yes
T.M required on adjacent roads	Yes
Overhead Power Cables	Yes
Overhead BT Cables	Yes
Underground BT Cables	Yes
Carriageway Markings Required	Yes
Existing Culvert	No
Central Overburden Removal	No
Raise Manhole's (no)	01
All Planing's to be utilised on site as directed by Site supervisor	No
Surface Course Material	AC10 Close Surf 100/150 PSV 60 0.5% Binder Enriched (Surf 2 ENR)

- Road Markings Key**
- Diag. 1003A**
White retroreflective thermoplastic screed double 'Give Way' lines. 600mm line, 300mm gap, 200mm width (300mm gap between the two lines).
 - Diag. 1004**
White retroreflective thermoplastic screed 'Warning lines', 4000mm line, 2000mm gap, 100mm width.
 - Diag. 1009A**
White retroreflective thermoplastic screed 'Give Way' lines. 600mm line, 300mm gap, 100mm width.



Do not scale - Use only figured dimensions
The contractor is to check all dimensions on site and report any discrepancies to the Site Supervisor. This drawing is to be read in conjunction with all other standard documentation.

© Crown copyright and database rights 2019 OS 100045049. You are permitted to use this data solely to enable you to respond to, or interact with, the organisation that provided you with the data. You are not permitted to copy, sub-licence, distribute or sell any of this data to third parties in any form.

Note: This plan is furnished as a general guide only and the Statutory Undertakers concerned data that no warranty as to its correctness is given or implied. It must not be relied upon in the excavations or other works made in the vicinity of each utilities service. Utilities information supplied Dec 2019.

- Key**
- Overlay carriageway with AC10 CLOSE SURF 100/150 PSV 60 50mm thick 0.5% Binder Enriched (Surf 2 ENR)
 - Mill carriageway 40mm and Inlay carriageway with AC10 CLOSE SURF 100/150 PSV 60 40mm thick 0.5% Binder Enriched (Surf 2 ENR)
 - Mill carriageway 0-50mm thick at tie-ins.
 - Structural patch, plane out 60mm of current carriageway level and inlay with 60mm of AC20 DBM 40/60 (BIN 1). Overlay with (Surf 2 ENR) as per key.
 - Deposit and compact Type 1 sub-base to raise field entrance/Passing place level to meet proposed carriageway level.
 - Existing Service Valve/ Washout Valve to remain in situ.
 - Existing Manhole to be adjusted to proposed carriageway level.
 - New Concrete grip as per SD-500-27.
 - Clean out ditch.
 - Existing signs to be cleaned.

- Notes**
- The utility information shown has been derived from information obtained from utilities companies. The accuracy of the locations of the utilities cannot be guaranteed. The Contractor should refer to original utilities drawings to verify the actual positions of mains and services on site. Contractors attention is drawn to the disclaimers on the utilities drawings.
 - Transportation, laying, compaction and testing protocols for surfacing operations to comply with BS594987:2015.
 - Tree branches overhanging carriageway throughout/side and sweep road prior to surfacing.
 - Poor road regularity from CH 180A to CH 230A, numerous potholes and patches can be found within this extent.
 - Existing kerbs located at island at the start of the site.
 - For utility information, refer to the Pre-construction Information.
 - Tar present throughout site:** no cores have been taken, the Contractor to treat all arising as tar bound material and arrange for disposal to an appropriately Hazardous Waste facility.
 - Grid reference: SO674827
 - Postcode: DY14 8UQ

POI	DATE	AP	DESCRIPTION	LMG	SE
REV	DATE	BY	DESCRIPTION	CHK	APP

DRAWING STATUS: **A - FIT FOR CONSTRUCTION**

2nd Floor Shirehall, Abbey Foregate, Shrewsbury, SY2 6ND, UK
T+ 44 (0) 1743 501060
wsp.com

CLIENT:

SITE/PROJECT: **2020-21 Highways Maintenance**

TITLE: **Site 70: Stottesdon - Harcourt Access 30Mph Section Construction and Constraints Plan (Sheet 1 of 1)**

SCALE @ A1: 1:500	CHECKED: M. Lake	APPROVED: S. Edwards
PROJECT NO: 70071466	DESIGNED: L. Menendez	DRAWN: A. Pal
		DATE: 26/10/2020

DRAWING No: **70071466-70-WSP-HPV-AS_PR-DR-CH-700-0701** REV: **P01**

© WSP UK Ltd